

**I. Make sure your system has the minimum specified requirements.**

**II. Set Color Policies**

In **CorelDraw™** versions **X4, X3, 12, 11, & 10** – Disable **Color Management** as follows:

1. Open or create a graphic.
2. From the main menu, select **Tools > Color Management**.
3. In the **Color Management Window**, set the **Style Option** (▼) to **Color Management Off** (see Fig 1 at right).

In **Adobe Photoshop CS3, CS2, and CS - Color Settings**:

1. From the **Main Menu**, choose **Edit > Color Settings**.
2. In the **Color Settings Dialog** (Fig 2), in **Working Spaces, RGB:** (Fig 3), select **RGB IEC61966-2.1** from the drop-down profile (▼) menu.

In **Color Management Policies, RGB:** (Fig 3), select **Convert to Working RGB** option in the drop-down (▼) menu.

In **Color Management Policies** (Fig 3), **Check** the three boxes that pertain to the two profile situations (**Profile Mismatches:**, **Missing Profiles:**) **Ask When Opening** (☑), **Ask When Pasting** (☑), **Ask When Opening** (☑).

In **Conversion Options, Engine:** (Fig 3), select **Adobe (ACE)** in the drop-down (▼) menu.

In **Conversion Options, Intent:**, choose **Perceptual** from the drop-down (▼) menu.

**Make sure all of the other selections conform to the settings shown in Figures 2 & 3, then click **OK**.**

**I. ChromaBlast-R Ricoh GX7000 System Requirements**

**Minimum Hardware:**

Pentium 4 – 3.0GHz or Athlon XP 2000+ Processor  
 512 MB System Memory

**Recommended Hardware:**

Pentium 4 – 3.0GHz or Athlon XP 2500+ Processor  
 1 GB System Memory

**Required Operating System:** Microsoft Windows XP, Vista®, or Windows 7 (32 & 64 bit) operating systems.

**II. Color Policies**

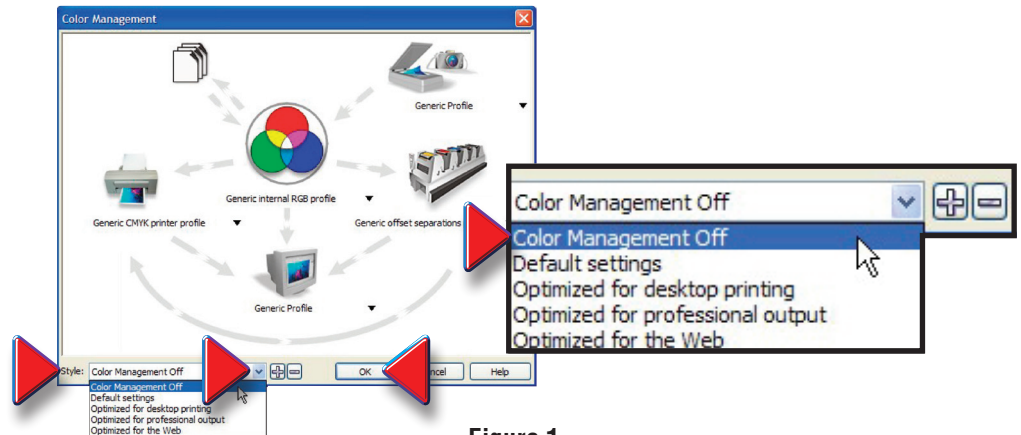


Figure 1

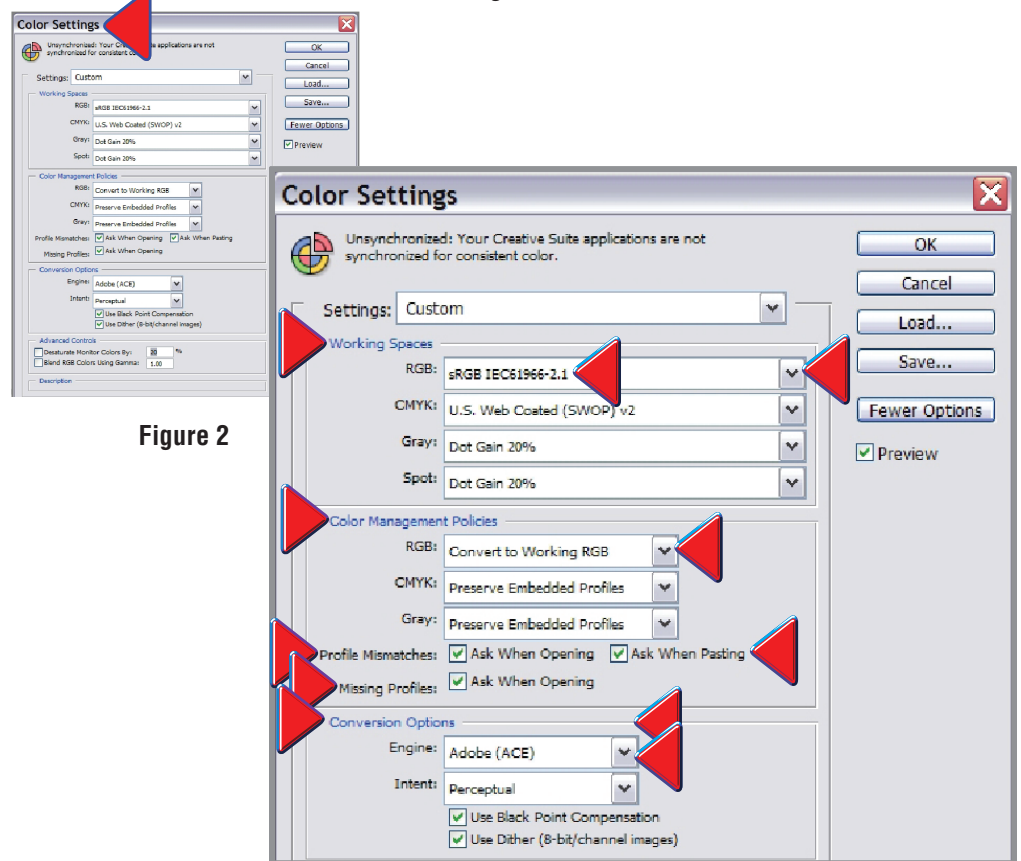


Figure 3

Figure 2

ink, differently.® is a Registered Trademark, and ChromaBlast and Sawgrass are Trademarks of Sawgrass Technologies, Inc. Ricoh, Aficio, and Gelsprinter are Trademarks of Ricoh Corporation.

## III. Set Document Properties

1. Create or import an image into your graphics application (**Adobe Photoshop**, **CorelDRAW**, Fig 1 and Fig 2 respectively).

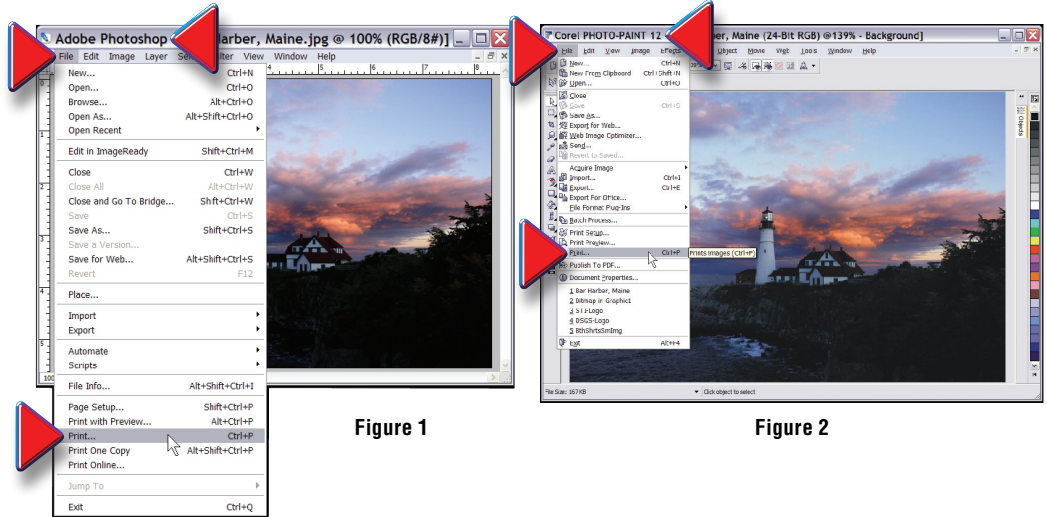


Figure 1

Figure 2

2. When you open or import an image into **Photoshop** for the first time, a pop-up window warns you of an **Embedded Profile Mismatch**, and asks you what action you want to take. **Accept** the default value, which is, **Convert document's colors to the working space**, and click **OK** (Fig 3).

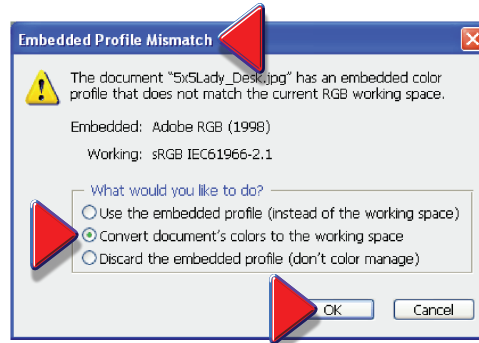


Figure 3

3. From your application's top menu, select **File**, then **Print**.

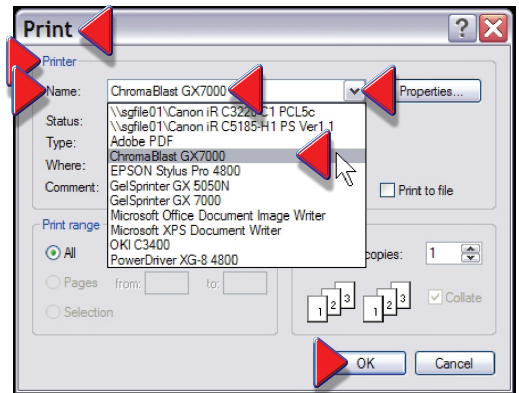


Figure 4

a. In **Adobe Photoshop**, **Print** dialog, **Printer, Name:**, select **Chromablast GX7000** in the drop-down (▼) menu (see Fig 4). **Do not select the Ricoh printer.** Click **OK**.

b. In **CorelDraw** or **Photo-Paint**, **Print** dialog, **General** Tab, **Destination, Name:**, select **Chromablast GX7000** in the drop-down (▼) menu (see Fig 5). **Do not select the Ricoh printer.** Click **Apply**.

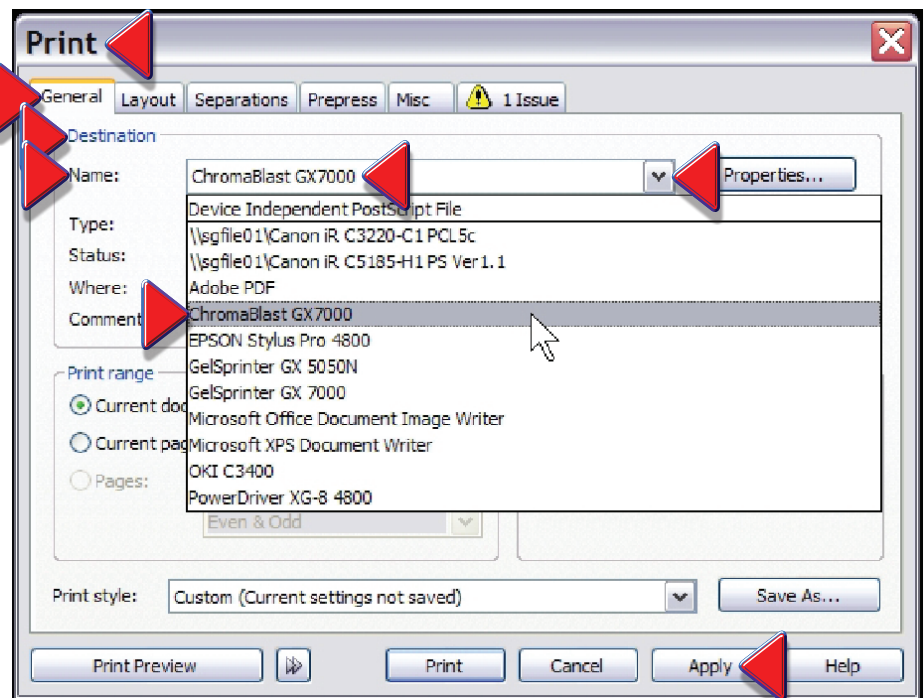


Figure 5

4. Click the **Properties** button (Fig 6, **Adobe**, Fig 7, **Corel**). This action will take you to the **Document Properties** window, **Virtual Printer Driver** area, where you have access to the three main property groups we have color coded for simplicity—**Paper & Driver Configuration**, **Color Options** and **Resources & Utilities** (see illustration below).

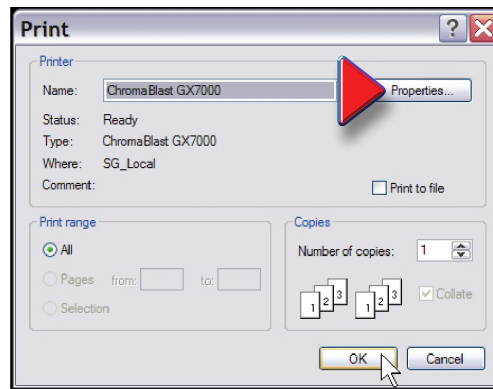


Figure 6

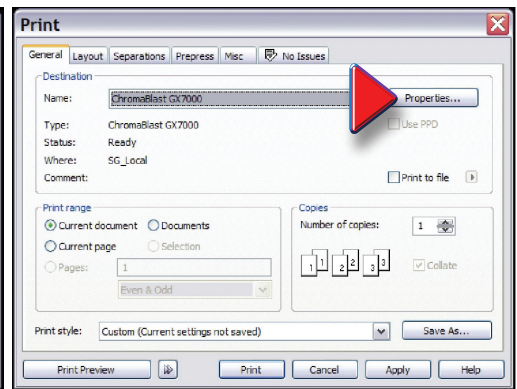


Figure 7

5. In the **Paper & Driver Configuration** group, **Driver Configuration**, confirm that the **GelSprinter GX7000**, (*charged with ChromaBlast-R Ink*), appears in the **OEM Printer** box. In **Paper Configuration**, select the paper size and the number of copies you want to print.

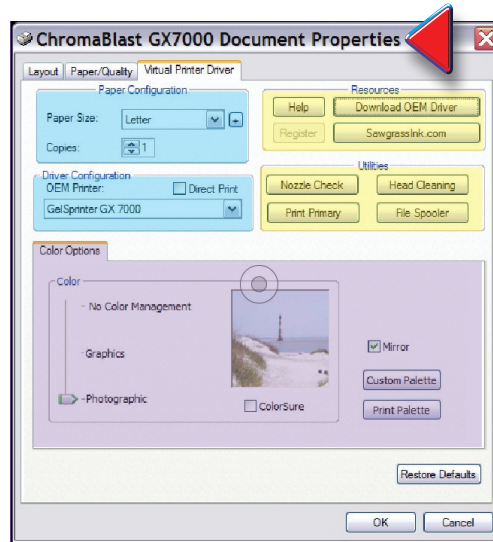


Figure 8

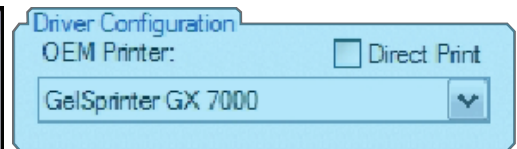


Figure 9

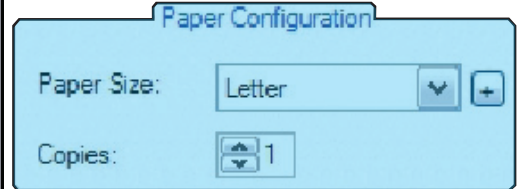


Figure 10

6. The **Color Options** group gives you access to color-management (see illustration below).

- a. **No Color Management** – Select this option if you choose not to apply a color profile.
- b. **Graphics** – Select this option when printing vector art, such as clipart, lines and text.
- c. **Photographic** – Select this option if you are printing photographic images and skin tones.
- d. **ColorSure** - Check this box if you wish to replace specific colors with spot colors selected from the ColorSure palette.
- e. **Mirror** – If the image is not already reversed in your application, check this box.

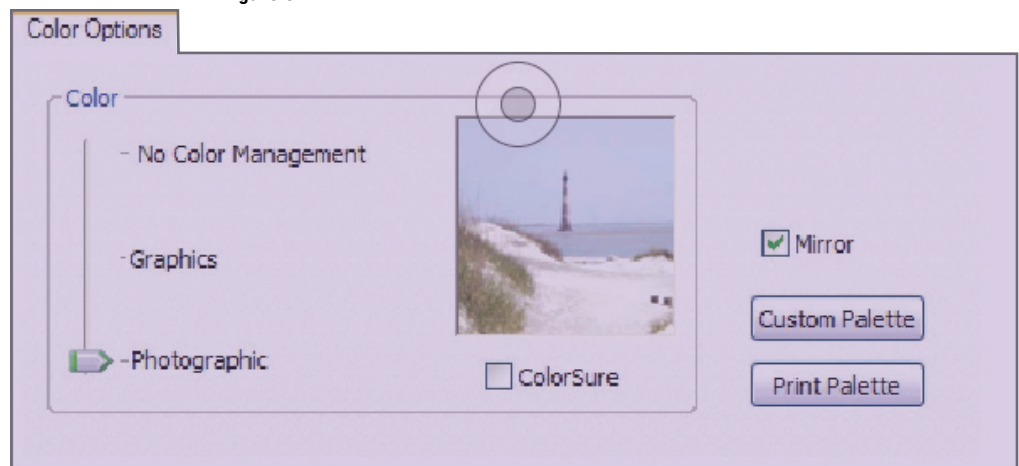


Figure 11

7. The **Resources and Utilities** group (Fig 12), **Resources**, includes a **Help** selection and other helpful resources, including a link to update your **Ricoh** driver (**Download OEM Driver**). In **Utilities**, this group includes the following options :

a. **Nozzle Check**: Click this button to print a test pattern before you begin printing to ensure that all of the print nozzles are working.

b. **Head Cleaning**: Click this button to perform a routine cleaning of the print head when your test pattern shows missing nozzles.

## IV. Print your Image

1. Be sure your **Ricoh GX7000** printer is on. Load **ChromaBlast** paper into the printer, print side down. The print side is opposite the **ChromaBlast** logo.

2. In the **Virtual Printer Driver** window of the **Chromablast-R** program, click **OK** below the **Color Options** area (see illustration Figure 16).

3. Click **OK** (**Adobe Photoshop** Figure 17) or **Apply**, then **Print** (**CorelDRAW**, Figure 18) in your application's **Print** window (see illustrations 17 & 18 at right).

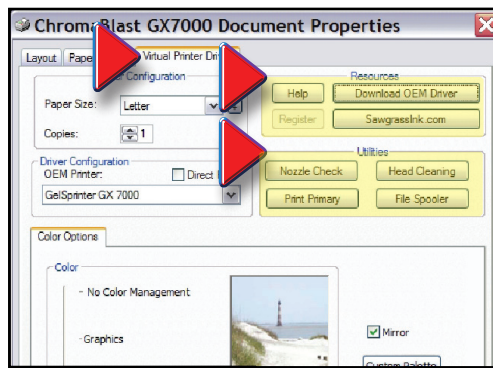


Figure 12

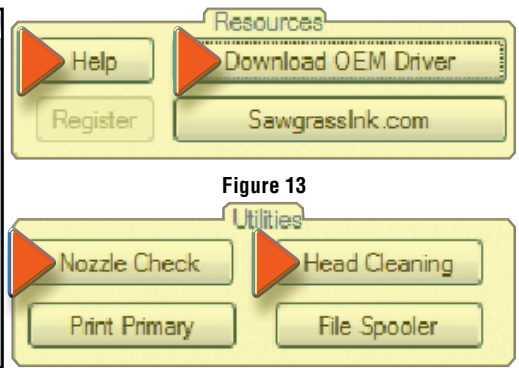


Figure 13

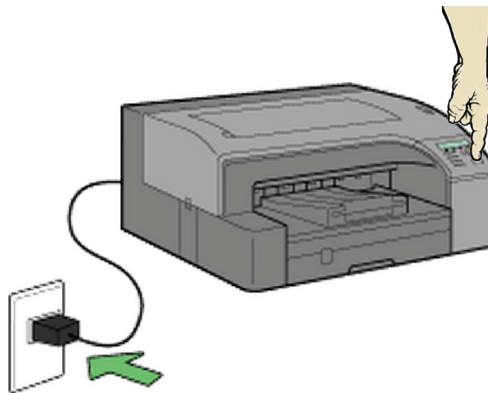


Figure 15

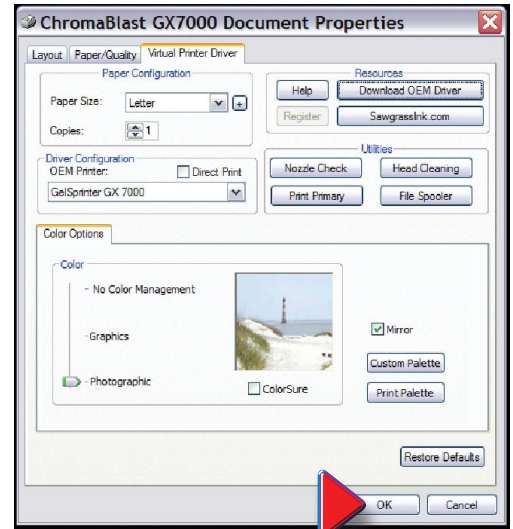
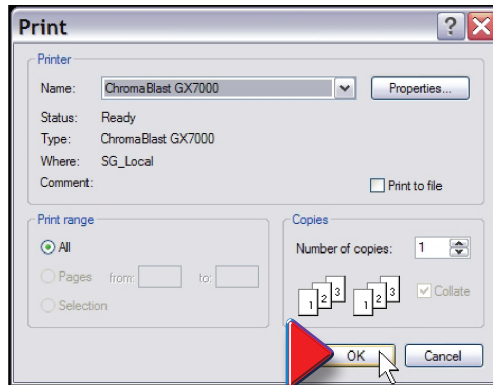
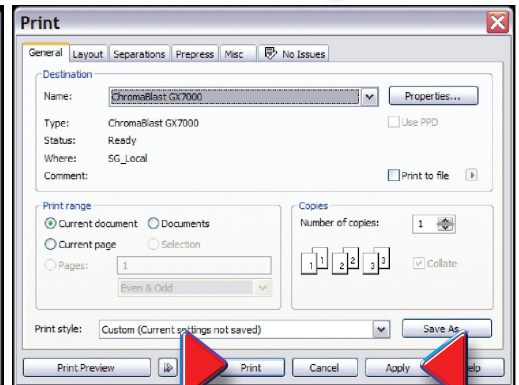


Figure 16



Adobe Photoshop — Figure 17



CorelDRAW — Figure 18

## V. ChromaBlast Transfers: Step-By-Step

Once your ChromaBlast System is set up and in place, printing and transferring an image onto a white or light colored 100% cotton garment is a breeze.

Just follow these simple steps, and you are on your way to creating one-of-a-kind, beautiful and profitable products.

**1.** Import an image (it could be a photograph from a digital camera) into your graphics application and manipulate it to suit your desired result. Manipulation may include sizing the graphic, setting the proper page margins and borders for printing or applying color correction if required.

**2.** Load **ChromaBlast** paper into your printer. The printable side is opposite the logo.

**3.** Click **Print** in your application and select **ChromaBlast driver** as the printing device. Ensure that the **Mirror** option is selected, unless you have already reversed the image in your graphics application.

**4.** Adjust your heat press settings. See chart to the right for suggested settings.

**5.** Place the garment on the heat press and place the ChromaBlast paper, with the image facing down, over the garment. Close the heat press.

**6.** After the allotted time, release the press and move the heat platen aside. While still hot, and with an even motion, peel the **ChromaBlast** paper off the garment (**hot peel**), and stretch the image area from top to bottom and side to side to reduce the hand on the fabric.

ChromaBlast / ChromaBlast-R (Suggested Press Parameters)		
	U.S.	Europe
Temperature	375°F - 400° F	190°C - 204°C
Pressure	60 psi (High)	4.22 kg/cm <sup>2</sup> ; 4.14 bar
Time	40 sec – 25 sec	40 sec – 25 sec

**IMPORTANT:** Due to variations in garments and heat presses, these settings may vary. For best results, test different **time/temperature** combinations to find one that works best with your **garment/heat press** combination. Please note, higher **temperatures** generally require less **time** to prevent scorching. An insufficient **time/temperature** combination may hinder ChromaBlast from completely curing to the cotton fibers, thus resulting in wash out.



## TIPS

- **Calibrating the heat press is recommended to ensure an accurate temperature. For this procedure, temperature test strips are more accurate than the use of infrared temperature guns.**
- **In an effort to reduce hand, the transfer should be peeled from the garment immediately after pressing (hot peel).**
- **If immediately after pressing, the paper is not easily peeled from the garment and resists removal because the transfer is somewhat tacky, increase the amount of cure time.**
- **If immediately after pressing, the transferred image has a slick or shiny appearance, increase the amount of pressure used.**